

## A-Tach # 50600

ST-1

**A-Tach**  
Mounts



**Designed for:** Kenworth T180,280,380,480  
2020 - 20\_\_

**NOTICE:** The product has been tested to fit securely to the listed vehicles. Instructions are provided for your convenience. You are responsible for the use of the product and to determine if you have the skill to attach the product without causing damage to your vehicle or the product. A-Tach Mounts will not be responsible for any damage to the vehicle due to the installation and/or use of the product.

Read all instructions and view the photos before attaching this product.

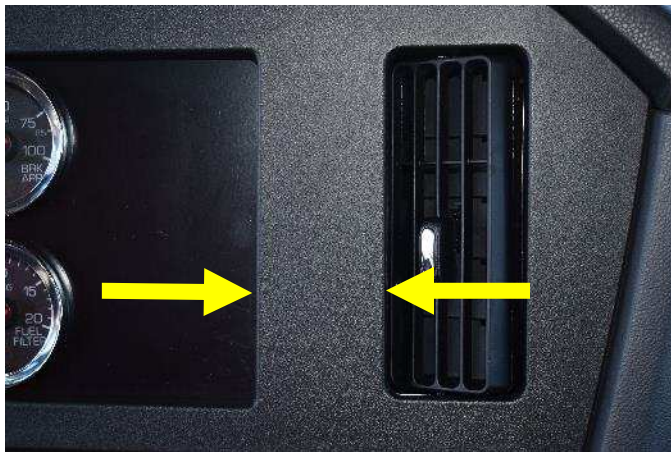
**Once the mount and holder are screwed together, the items are considered used and non-refundable.**

For best results, attach the mount or hold the mount over the place where the mount attaches to the dash **BEFORE** attaching the device holder to the vehicle mount to ensure a proper fit with the location. Most often the mount will appear to be a little too big or small for the intended location. Once attached, the mount should remain attached until you would like to permanently remove it.

**WARNING: AVOID extreme heat conditions. It can damage the device and the mount.**

Online instruction can be found on the product page – Or at link:

<https://www.atachmounts.com/assets/images/PDF%20-%20Instructions/50600%20-%20Instructions.pdf>



(1) Clean the area where the mount will attach. The edges of the mount will attach into the seam on the right and left sides center posts on the dash center vents illustrated with the arrow in the photo above.



(2) Remove the covering from the tape. Press one edge of the mount into the vent side seam. The seam will be right behind the dash panel. Use the seam tool if needed to open the seam a little.



(3) Press the other edge of the mount into the opposite side seam. The seam will be right behind the dash panel. Use the seam tool if needed to open the seam a little.



(4) Press the edges of the mount all the way into the seams. The tape will not leave any residue if the mount is removed in the future.

## Warranty and Returns

### **A-Tach Mounts Limited Warranty**

A-Tach warrants the product to be free of all defects in materials and workmanship for a period of six (6) months from the date of purchase. This warranty extends to the original buyer. Damaged products caused by anything outside of shipping damage are not covered by this warranty.

Within the period of this warranty, A-Tach has the option to repair or replace the item or refund the purchase price. Any replacement parts will be done on an exchange basis. All repairs and service must be done by A-Tach. Product must be delivered to A-Tach during the warranty time along with proof of purchase price and date. A-Tach mounts does not supply return shipping labels. The shipping and packaging costs will be the buyer's responsibility. Labor costs and parts to repair will be A-Tach Mounts responsibility.

A-Tach Mounts will not be responsible for any damage to the vehicle or product due to the installation and/or use of the product. A-Tach is not responsible for damage caused by extreme heat conditions. Any above exclusion may not apply in states that do not allow the exclusion or limitation. This warranty gives you specific legal rights. You also may have other rights which vary from state to state.

### **Returns**

Before any product may be returned, A-Tach must give prior approval. An RMA# (Return Merchandise Authorization Number) needs to be given to the buyer to return a product. All returns must be within (30) days of the invoice date and include proof of purchase. Any returned product must be undamaged and in like new condition. Returned product must be scratch free with no additional holes or screw marks on the product. A-Tach mounts does not supply return shipping labels. The shipping and packaging costs will be the buyer's responsibility.

A-Tach reserves the right to withhold any refund if the product is believed to be damaged. A return must include a copy of the original order or invoice. All parts and components that were shipped with the original product must be included with the returned product.

### **Contact Information:**

A-Tach Mounts  
Clarkston, WA 99403  
cs@attachmounts.com